



MAGIC CIRCLE PLAYERS

The MAGIC of Live Theatre

SINCE 1959

March Teaser

News of the Magic Circle Players

2023

LOST IN and Found

GOOD NEWS! You can still find mystery, romance, humor and marriage-counselling advice in one captivating play!

Case in point: **Lost (And Found) In IKEA**, the latest stage play presented by the Magic Circle Players! Directed by Kevin Innarelli and Co-Director Scott Baadte, this fast-paced comedy by Gary Ray Stapp introduces a delightful cast of ten shoppers looking for love in one of the world's largest retail IKEA outlet stores. In the opening scene, "Dear Husband" (Bob Dietrich) and "Dear Wife" (Pam Carlson) set the mood of the shopping experience in one of the mammoth IKEA stores. The budding romance between "Winifred" (Marissa Isgreen), and Lex (Chuck Richardson) is no less unpredictable than the behavior of Isaiah (Cole Reiff), who has moved into one of the store's displays. Then there are Dot (Amanda Laube), a chronic shopaholic, Steffan (Aidan McBride) a mysterious journal keeper, and Mags, played by Spencer Crosby (the late wife of Lex,) who is determined to find a match for her former mate. Rounding out the cast are Oz (Scott Pollak,) the wise security guard and Mrs. Peale (Chris McDonald,) a retail activist.

Lost (And Found) In IKEA combines enough mystery, romance, humor and marriage-counselling advice into one viewing to put it on your "favorite comedy" list!

What's an IKEA? (Your 30-Second Glossary)

IKEA—More Than A Word

In 1943, when Ingvar was 17, his father rewarded him with a small sum of money for doing well in school, despite being dyslexic. With it, Ingvar founded a business named IKEA, an abbreviation for Ingvar Kamprad from Elmtaryd, Agunnaryd, his childhood home.

IKEA—An Amazing Success

IKEA is a multinational group of companies that designs and sells ready-to-assemble furniture (such as beds, chairs and desks), appliances and home accessories especially in the Swedish Modern style. As of December 2022, there are 460 IKEA stores operating in 63 countries. How did these stores become so successful?

The Gruen Effect—Why Am I Here?

'Named after Victor Gruen, an Austrian shopping mall architect, the Gruen Transfer describes the moment people enter a store and are engrossed in an intentionally overwhelming array of visual and auditory encounters from every direction. This causes them to forget their original reason for going to the shop, so they tend to make more impulse purchases. Customers also lose track of time and become so engrossed in this new experience that they may get lost and need assistance to find the exits

ATTENTION: No Gruen Effect methodologies have been used in this performance. Or have they?

Calendar

Sunday	Monday	Tuesday	Wednesday	Thursday	Friday	Saturday
26	27	28	1	2	3	4
			March			
5	6	7 Box office open 2:00pm-5pm →	8	9	10	11
12	13	14 Box office open 2:00pm-5pm →	15	16	17 Lost (& Found) in IKEA 7:30pm	18 Lost (& Found) in IKEA 7:30pm
19 Lost (& Found) in IKEA 2pm	20	21 Box office open 2:00pm-5pm →	22	23	24 Lost (& Found) in IKEA 7:30pm	25 Lost (& Found) in IKEA 7:30pm
26 Lost (& Found) in IKEA 2pm	27	28 Box office open 2:00pm-5pm →	29	30	31 Lost (& Found) in IKEA 7:30pm	1 Lost (& Found) in IKEA 7:30pm April

CORPORATE SPONSORS



David & Gaynelle
MIZE

DREW LOEWEN
CREATIVE



BOARD OF GOVERNORS

Kevin Innarelli · Kenny Easton · Dru Weaver · Renee Lee
Allyson Crosby · Merrilee Robertson · Judy Wind

From Lisa

I was overwhelmed by the support, encouragement and participation of the community in **My Funny Valentine on Route 66**. **THANK YOU** for donating items for the auction, buying tickets and supporting your community theatre! Proceeds from this fundraiser will contribute to our Capital Campaign to update and remodel the building. This summer we will complete Phase One - replacing our roof, and creating an exterior that invites everyone to come inside and experience the magic of life theatre.

WE ARE PLEASED TO ANNOUNCE OUR 2023/ 2024 SEASON.

Each fall, Magic Circle directors are invited to submit plays to be considered for production. A volunteer Season Selection Committee reads all the plays, considers the proposals, and in January, submits their recommendation to the Board of Governors. Thank you to Mary Burgner, Kevin Cohenour, Mary Dietrich and Jim Isler for serving on the committee, and to Judy Wind for her capable leadership.

THE 2023/2024 SEASON LINE-UP IS AS FOLLOWS:

SEPTEMBER **Little Shop of Horrors** • Musical

JANUARY **A Walk in the Woods** • Drama

NOVEMBER **Deathtrap** • Mystery

MARCH **Noises Off** • Comedy

MAY **Something Rotten** • Musical

Patron and Season tickets will be available for purchase/renewal in MAY.

Magic Circle in the Community



HARP & HAMMERS IN MOTION all decked out for their Christmas concerts, Magic Circle had the right hats to fit the occasion!



Route 66 rehearsals at FIRST CHURCH OF THE NAZARENE.



VALLEY SYMPHONY BRASS Comes to Magic Circle. They were the icing on the cake of the Route 66 band!

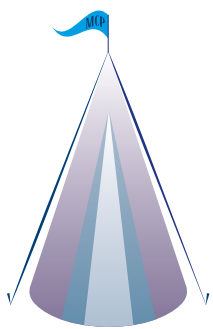


The Sound of Music cast rehearsing at CHURCH ON THE HILL.



My Funny Valentine on Route 66 banner at ALPINE BANK Montrose.

COME *Play* WITH US



YOUTH THEATRE DRAMA CAMP MAGIC CIRCLE PLAYERS

Our highly anticipated Drama Camp fills up very quickly every year. This theatrical day camp teaches young actors the art of auditioning, essential elements of acting, how to bring a character to life on stage, and how to actually be in a play. This one week camp culminates in a free public performance where the students showcase what they have learned. Although the elementary and middle school students have camp in the same week, they are separate productions.

HIGH SCHOOL DRAMA CAMP JULY 16-23

For more information
Dru Weaver 970 249 6010

DRAMA CAMP FOR ELEMENTARY AND MIDDLE SCHOOL AGED ACTORS

WEEK 1: JUNE 4-9 WEEK 2: JUNE 11-16

For more information:

Kim Santich · 720 289 8940 · kimsantich@comcast.net
Nancy Ballantyne · 970 249 1346 · nancybgm3@gmail.com

**REGISTRATION IS ONLINE AT MAGICCIRCLEPLAYERS.COM
AND WILL ONLY BE AVAILABLE FROM 12:00AM APRIL 17 THRU 11:59PM APRIL 20.**



CALLING ALL DIRECTORS INTERESTED IN READERS THEATRE.

The Readers Theatre season selection committee is looking for Directors for the 2023 - 2024 Season. We have 3 production opportunities, which include Patron's Night (July 28, 29 & 30), Christmas Show (November 30 – December 3), and a third production April 5 & 6, 2024. Readers Theatre showcases high quality scripts, with limited or no costumes, set, or blocking, and because the actors use their scripts there is limited rehearsal time and no memorization.

Directors can submit a script of their choice or the committee has many scripts available to suggest (if you are interested but don't have a particular script in mind.) All submissions need to be received by May 1, 2023.

For further information please contact Kim Santich kimsantich@comcast.net 720 289 8940 or Nancy Ballantyne nancybgm3@gmail.com 970 249 1346

COME *Audition* WITH US

Auditions Held at Magic Circle Players, 420 S. 12th St, Montrose

Opening September 2023

LITTLE SHOP OF HORRORS

AUDITIONS

MONDAY, MAY 15 @ 6:30PM

TUESDAY, MAY 16 @ 6:30PM

Casting 8 leads, with 10 -12 ensemble roles

A deviously delicious Broadway and Hollywood sci-fi smash musical, *Little Shop Of Horrors* has devoured the hearts of theatre goers for over 30 years. A meek floral assistant, Seymour Krelborn, stumbles across a new breed of plant he names "Audrey II" - after his coworker crush. This foul-mouthed, R&B-singing carnivore promises unending fame and fortune to the down and out Krelborn as long as he keeps feeding it, BLOOD. Over time, though, Seymour discovers Audrey II's out of this world origins and intent towards global domination! One of the longest-running Off-Broadway shows, *Little Shop Of Horrors*, the charmingly tongue-in-cheek comedy has been produced worldwide to incredible success.

LADY IN THE VAN

When I began this journey with Miss Shepherd, I wanted to bring something beautiful, elegant, and intellectual to the Magic Circle stage. Little did I realize that Mary Shepherd would be the embodiment of that message in all her gentile sassiness and vulnerable incontinence.

Miss Shepherd's van brought her to life; it was protection, comfort, and her respite from reality, so it needed to have a life on stage, comfortable in its surroundings as it migrated around the gentrified neighborhoods of Camden, London. With that, 23 Gloucester Place sprung to life!

Scott Pollak was perfectly suited for the role of Alan Bennett. Elisa McKee WAS Miss Shepherd, fully embodying her elegance and grace under the grime and tattered clothing. David Olson's, Alan Bennett alter ego provided narration and a sense of leadership to the dialogue. Tiffany McNeil and Nathan Hamm provided the perfect balance of genuine concern and ironic disgust, while the Social Worker, played impeccably by Molly Benson, revealed a real life clinical perspective. Merrilee Robertson's and Michelle Wankier Terry's characters bracketed the whole story with societal perspective.

The story could not have been told without the supporting cast: Dru Weaver, Hap Nowakowski, Kaisa Simon, Zoe Wood, and Michela Bishop and crew: Bryan Smith, Randy McBride, Janel Culver, Amanda Laube and Aidan McBride.



Thank you to all who came to share this beautiful and touching experience with us. This show, in many ways, has changed my life forever; most of all it has taught me to "just get on with it."

**Casey Dukeman with
Assistant Director
Jason Atchley**



MY FUNNY VALENTINE ON ROUTE 66

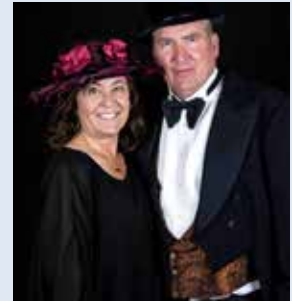
I love Community Theatre; it is the very definition of collaboration!

I had an idea, but it took a stellar cast and crew rallying together, generously contributing their energy, time, and talent to create *My Funny Valentine on Route 66*. Our cast and crew were aged 13 to 80, middle schoolers to a doctoral student, the Montrose City Manager and a County equipment operator, a retired banker and multiple airport employees, healthcare professionals, a personal trainer, a chef, retail workers and servers, moms, musicians, and a social worker. Our music directors had 109 years of combined experience! We had parents and children, grandparents and grandchildren, siblings, spouses, aunts and uncles, and a whole pile of cousins. The Stone House catered, the Valley Symphony Brass Band boosted our sound; each actor, the crew, the audience - all part of the Circle that create the Magic; each part of the lives that are impacted by theatre. A cast member wrote, "Theatre has really helped me with my depression. I felt like no one noticed me, and people would talk over me all the time. But as soon as everyone stepped on that stage, we were like family.

Suddenly, I was seen. I'm just about as happy as I've ever been!"

I love Community Theatre!

**Lisa Rediger
with her favorite,
Lance Rediger**

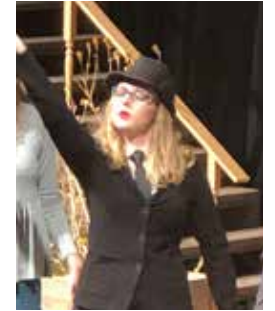
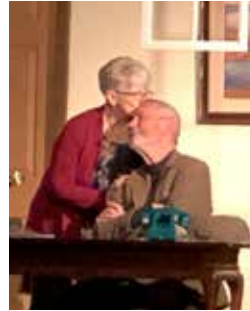


My Funny Valentine on Route 66





It's a WRAP!
Lady in the Van



NONPROFIT ORGANIZATION
U.S. POSTAGE PAID
MONTROSE, CO
PERMIT NO. 11

RETURN SERVICE REQUESTED
Montrose, CO 81402
P.O. Box 1897
Magic Circle Players
MONTROSE, COLORADO

